

# “Telekomunikācijas pakalpojumi”



**Abonents**

**Akumulators, baterija**  
(mobilam telefonam)



**Astoņciparu numurs**

**Bez maksas (1)**



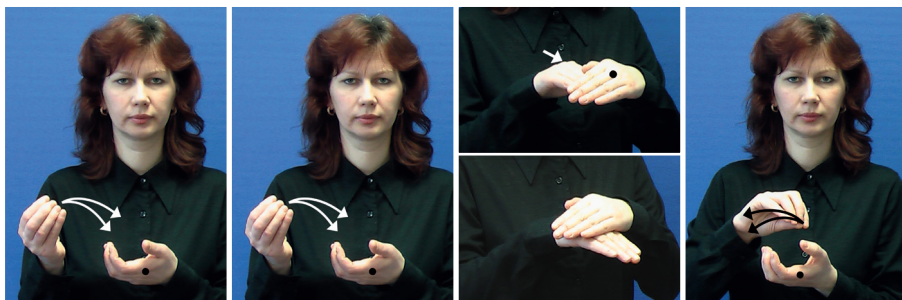
**Bez maksas (2)**

**Ciparu režīms (veids)**



**Eksklusīvs mobilais telefons**

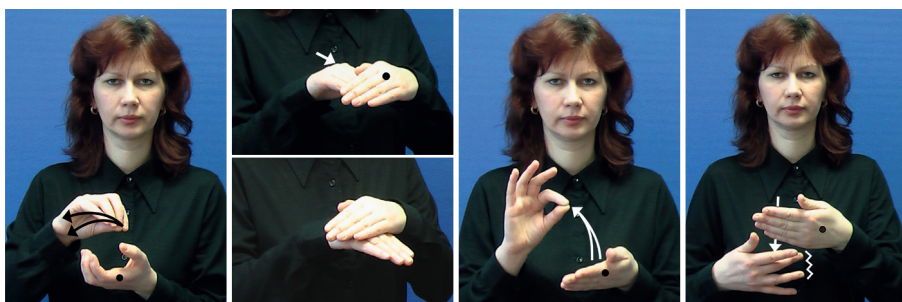
**Ierobežots skaits**



**Iesūtīt**

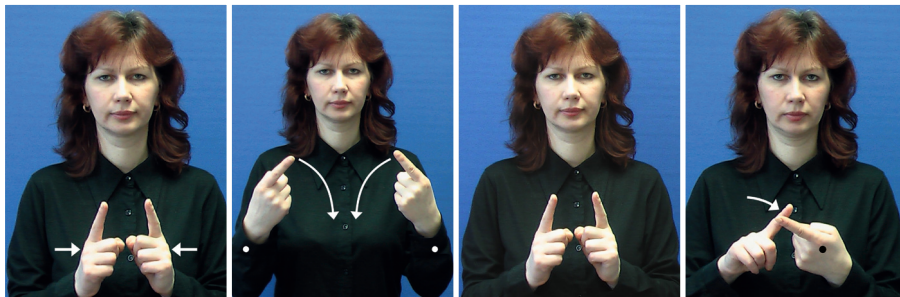
**Iesūtne**

**Izsūtīt**

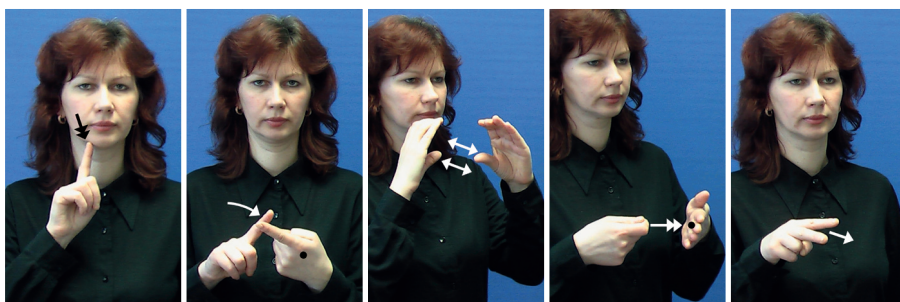


**Izsūtne**

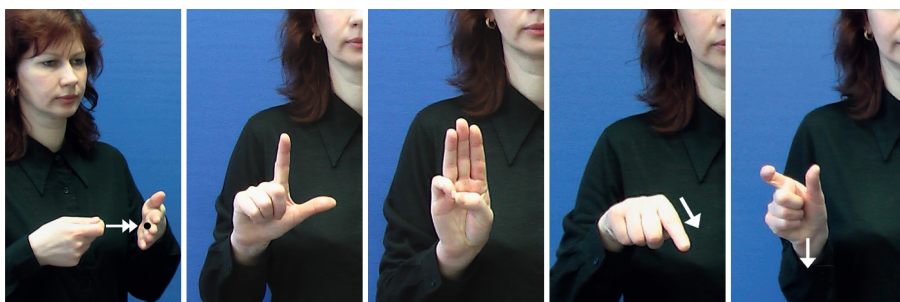
**Izvēlne**



**Īslaicīgs pieslēgums (1)**

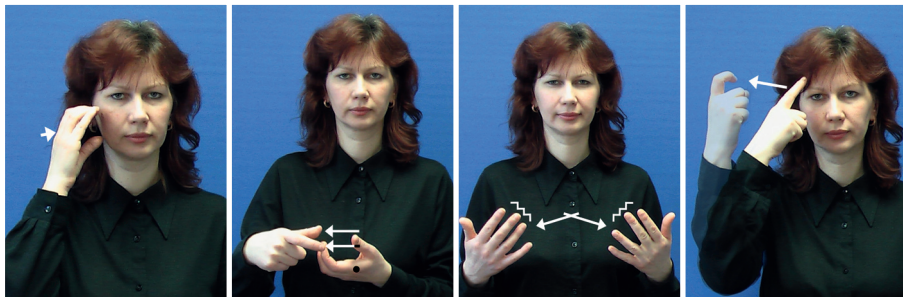


**Īslaicīgs pieslēgums (2) Komunicēties Lādētājs**



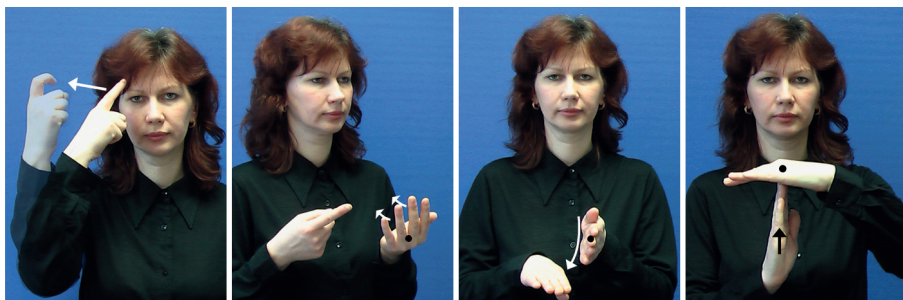
**Lādēt**

**LMT klients**

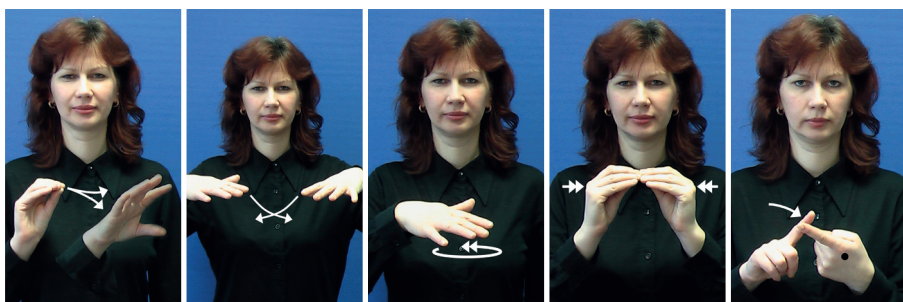


**Mobilā telefona displejs**

**Multizīņa (MMS)**



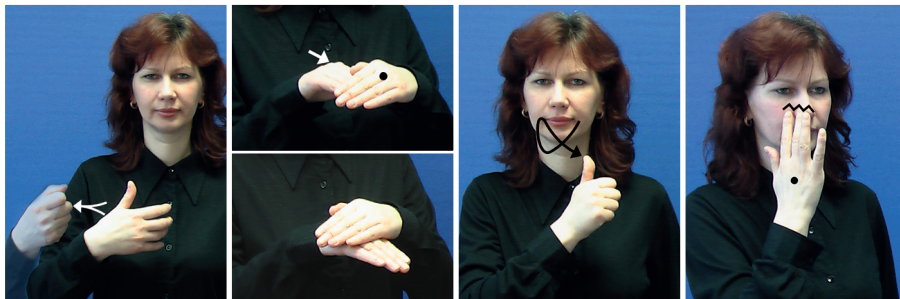
**Neierobežots SMS skaits**



**Nosūtīt,  
sūtīt**

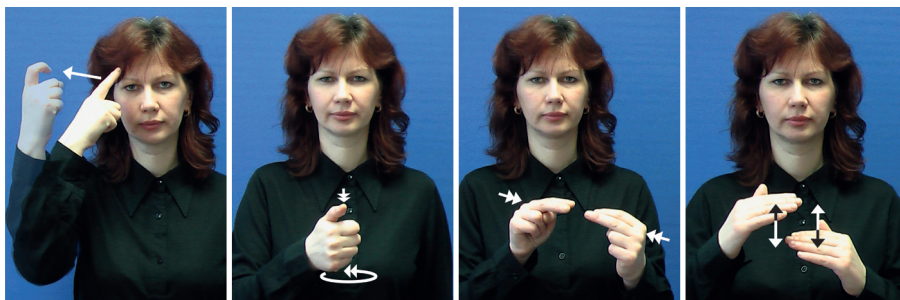
**Pārklājuma zona**

**Pastāvīgs pieslēgums**



**Piegādes atskaite**

**PIN kods**



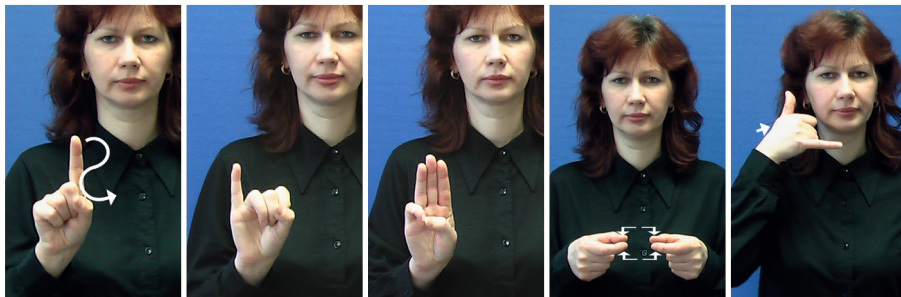
**Rakstīt izziņu (SMS)**

**Sakaru kvalitāte**



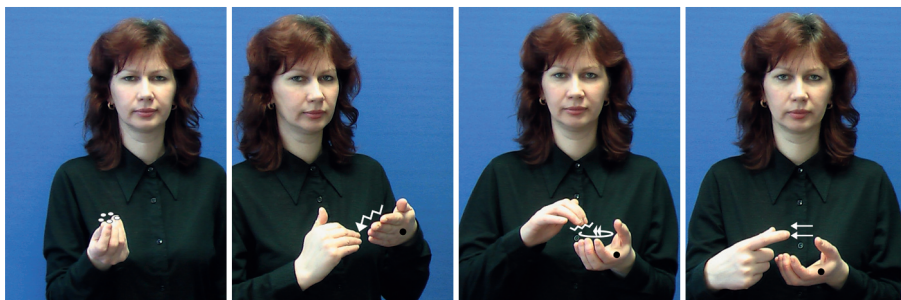
**Saglabātās ziņas**

**Sazināties**



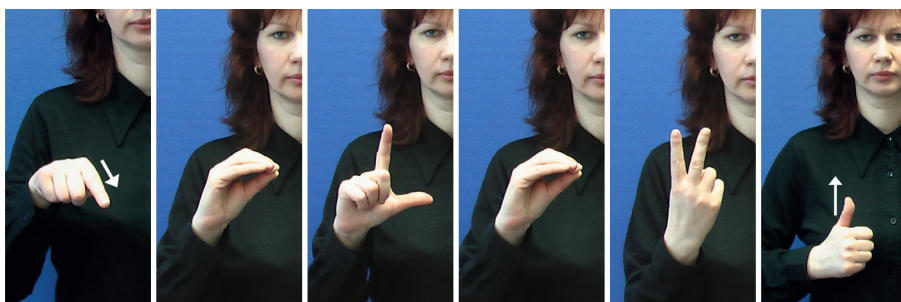
**SIM karte** (čips)

**Tālrunis,  
telefons**



**Tarifs**

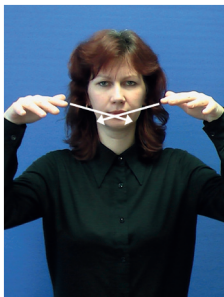
**Tastatūra**



**TELE 2 operators**



**Tērzēt**



**Tīkls**



**Vibrozvans**



**Viesabonēšana**



**Vietējais zvans**



**Zvanīt**





## Mobilo telefonu tipi:



**Klasisks**



**Saliekams**  
(atverams,  
atlokāms)



**Sensors**  
(skārienjūtīgs)



**Slaiders**  
(izbīdāms)